

April 2019

# Specification Today

# st

## **New Materials**

Ecor

## **Spotlight**

Roofing & Skylights

Acoustics

Lighting & Interiors

## **Materials Library**

Bennetts Associates

Royal College of Pathologists

## **Specifiers Choice**

Heatherwick Studio

## **Education**

Sarah Wigglesworth Architects

If\_Do

## **Glass**

Ofis Arhitekti

Gianni Ranaulo Design

Guy Greenfield Architects

Faulkner Browns

## **My Object of Desire**

by Chris Wilkinson



# Classroom Context

Sarah Wigglesworth Architects is revitalising existing facilities at Parliament Hill School using colour, joinery and light

## Photos

Beccy Lane, Positive Image Photography

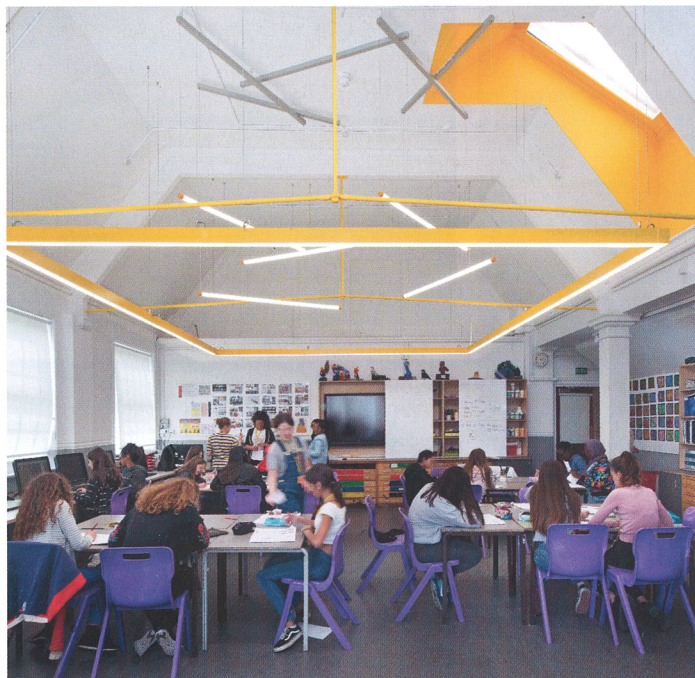
Sarah Wigglesworth Architects is working with two adjacent secondary schools in Gospel Oak, north London — Parliament Hill School and William Ellis School — on a renewal programme to revitalise existing classrooms. The work coincides with the construction of new accommodation to the rear of the building, and a new sixth form building which fronts Highgate Road.

The first package of work to be completed is the art and design department on the second floor at Parliament Hill School, which was refurbished to improve and extend facilities for art, photography, design and textiles.

SWA worked with the school to develop an aesthetic approach inspired by the use and quality of the existing spaces. For the second-floor rooms, an overarching theme of 'artistic and experimental' inspired three key aspects of the interventions: the fresh and coherent use of colour; a new and refurbished joinery programme; and elegant new lighting compositions.

The palette is based on the school colours of yellow and purple. Bright colours highlight existing architectural features and bring new vibrancy to the spaces. Upgraded finishes and decorations include new floor finishes, exposed services painted and boxed out, and the restoration of richly colourful original tiling and oak parquet flooring.

The architect ensured that the changes reflected the school's teaching methods and requirements. New teaching walls, made of natural and robust plywood, facilitate the storage of teaching materials along with the presentation and creation of art and design work. Existing pieces of furniture, such as plan chests, were creatively re-used and incorporated into the walls.





New lighting compositions and coloured fittings create optimum light levels and bring a dynamic element to the classrooms, acknowledging the vaulted roof spaces. In each classroom continuous, suspended LED strips with yellow aluminium casings, are featured, with two character rooms including accents of suspended strip lights in non-linear arrangements. Track lighting is also used to create a new art display wall.

Improvements were also made to the overall functionality of the second floor accommodation, such as the reconfiguration of existing spaces to provide a new darkroom facility, staff room and photocopier room, and demolishing and rebuilding a feature bay window. The delivery of mechanical and electrical services has been enhanced, including additional power supply, new lighting, and new sinks and sanitaryware.

To overcome the previous issues of overheating, a minimal-intervention servicing strategy was developed. This includes improved control of the heating system through the introduction of thermostatic valves to existing radiators, restoring the functionality of the existing windows and employing environmental modelling software to design optimal ventilation, which is fully controllable by both teachers and students.

The ongoing programme of work includes new music facilities at Parliament Hill School. At William Ellis School, light-touch tempered canopies will transform the ventilation strategy in the main hall, and provide new circulation and dwelling spaces for staff and pupils.

## Below

Second-floor reflected ceiling plan

### Key to interventions

Extent of works

New dropped ceiling

floor-to-ceiling height 2600mm

Suspended strip lights in

non-linear arrangement

LED spotlights

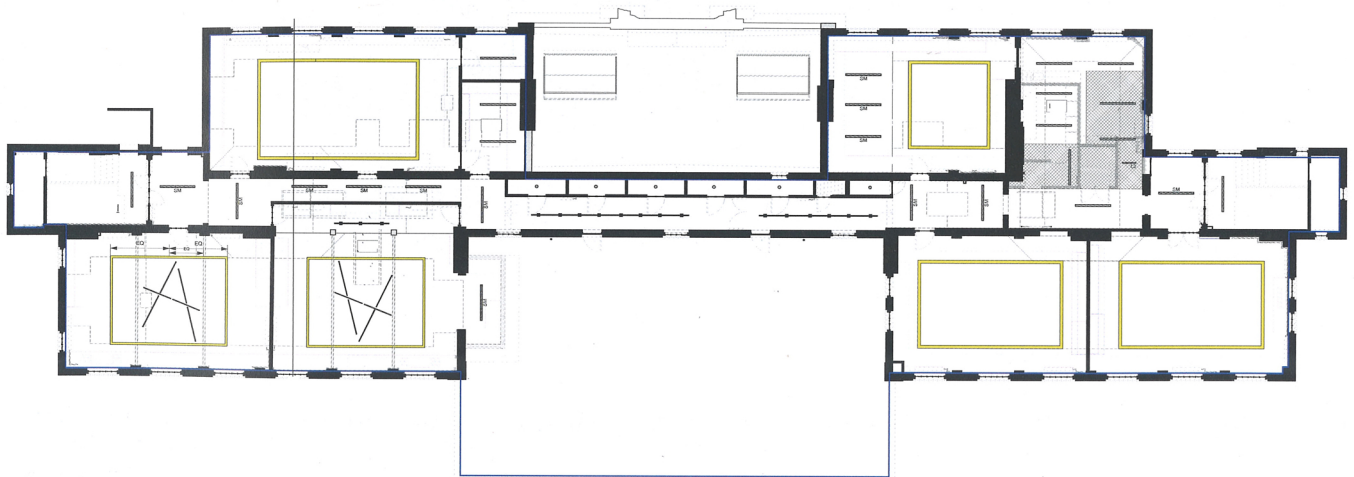
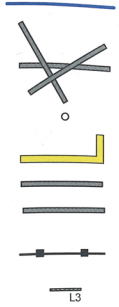
Suspended LED strip with PPC aluminium casing in yellow

Surface-mounted LED strip

Suspended LED strip

LED spotlights on adjustable suspended rail in black

Low-level wall fitting to darkroom entrance

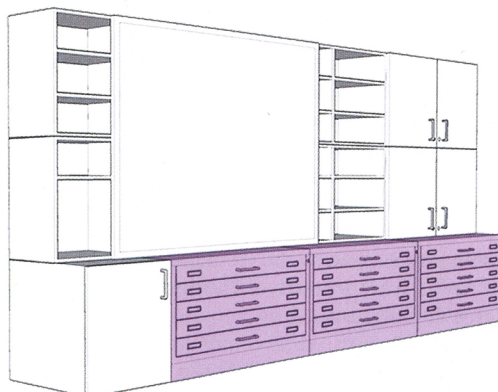


## Left

Room R207 as it was and as modified, showing the non-linear arrangement of suspended strip lighting, suspended LED strip with aluminium casings in yellow, existing windows revealed to admit more natural light, and new teaching walls.

## Right

A teaching wall incorporating existing plan chests. Carcasses are made from 18mm birch-faced BB/BB grade, hardwood core plywood. Surfaces are finished to the visible faces with an Egger decorative laminate, leaving exposed plywood edges. plywood faces and edges are finished in clear matt gloss PU lacquer.



## Project team

### Architect

Sarah Wigglesworth Architects

### QS

Currie & Brown

### MEP engineer

OR Consult

### Structural engineer

Price & Myers

### Contractor

Bolt & Heeks

### Client

Parliament Hill School/London Borough of Camden

## Selected suppliers & subcontractors

### Paint

Dulux

### Joinery

Timbatec

### Lighting

RIDI

### Marmoleum flooring

Forbo Flooring Systems

### Surface laminates

Egger